

**bamboo ali**  
THE LEADING OF BAMBOO IN VIETNAM







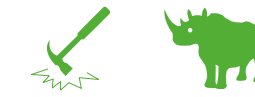
## WHY IS BAMBOO THE BEST SUBSTITUTABLE TO NATURAL WOOD?



Bamboo is one of the fastest growing plants in the world. Bamboo can reach up to a meter of growth per day and it becomes a great sustainable resource that substitutes efficiently to hardwood timber. During growth bamboo plant absorbs more CO<sub>2</sub> than is released during production. All solid Bamboo'Ali products are therefore guaranteed CO<sub>2</sub> neutral over the complete lifecycle.



Bamboo products are also a healthy choice as they are antistatic and anti-allergic. Further they have very low emissions of harmful VOCs (Volatile Organic Compounds). The most striking feature of Bamboo'Ali products is certainly its natural beauty. The beautiful natural grain gives bamboo a distinct design appearance.



Although bamboo plant is formally not a wood but a grass, it has excellent hardwood like characteristics: it is very hard and durable. This means industrial bamboo material can be used in heavy duty applications. Because of the composition of long individual fibers, bamboo products will shrink and swell less than most solid wood species, providing a very stable solution.

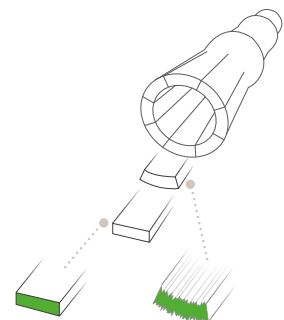


Thanks to advanced thermos technology, carbonization and heat presses, bamboo products are created for diverse colors and textures, meeting unlimited demands for the interior and exterior application. Laminated bamboo has a hardness of 1410 Psi, harder than Oak or Ash, the most popular timber woods. Strand-woven bamboo reaches 3562 Psi, higher than most of hardwoods.





BAMBOO FLOORING, WALL AND CEILING PANELS ARE BEAUTIFUL WITH NATURAL COLOURS, HIGH WEARING AND FIRE RESISTANT. THEY PROVIDE VIABLE ALTERNATIVE TO WOOD AND OTHER BUILDING MATERIALS. BAMBOO FLOORING MAKES THE HOME WARMER IN WINTER AND COOLER IN SUMMER. BAMBOO'ALI IS THE MARKET-LEADING SOCIALLY RESPONSIBLE BAMBOO PRODUCT SUPPLIER IN VIETNAM.



### STEM TO STRIP

After 3-5 years the bamboo stems are ready for harvest. Then the stems are split lengthwise to strips and the outer skin (bark) is removed. Naturally, the strips have a light yellow colour (natural), but can they be steamed to acquire a light brown colour (caramel).



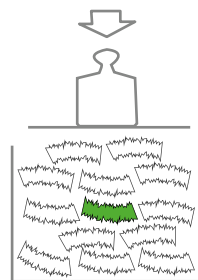
### HORIZONTAL

In this horizontal structure, the bamboo strips are positioned horizontally and glued together.



### VERTICAL

In the side pressed version, the bamboo strips are positioned vertically and glued together.



### STRAND WOVEN

Here the bamboo strips are crushed and then glued under extremely high pressure. This compression increases the density from around 700kg/m<sup>3</sup> to more than 1000kg/m<sup>3</sup> which makes the final product much harder.



INDOOR COLLECTION

<b>HARDNESS</b> 1100-3500 Psi	<b>BENDING STRENGTH</b> 105-145 Mpa	<b>TENSILE STRENGTH</b> 115-155 Mpa	<b>DENSITY</b> 750-1200 kg/m <sup>3</sup>
-------------------------------------	---	---	---

VGA-12C 540.000Đ/M <sup>2</sup>	VGA-01C 610.000Đ/M <sup>2</sup>	VGA-02C 700.000Đ/M <sup>2</sup>	VDA-03C	VDA-03N 850.000Đ/M <sup>2</sup>	VDA-03T	VPA-04S	VPA-04B 1.200.000Đ/M <sup>2</sup>	VPA-04A

### PRODUCTS CODE

VGA-12C	980*98*12mm	VDA-03C	920*130*14mm	VPA-04S	1850*130*14mm	VPA-04W	1850*130*14mm
VGA-01C	960*96*15mm	VDA-03N	920*130*14mm	VPA-04B	1850*130*14mm	VPA-04L	1850*130*14mm
VGA-02C	960*96*15mm	VDA-03T	920*130*14mm	VPA-04A	1850*130*14mm	VPA-04V	1850*130*14mm

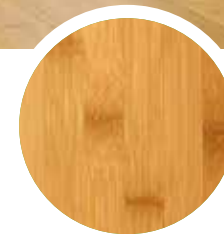
VPA-04W	VPA-04L 1.200.000Đ/M <sup>2</sup>	VPA-04V



## CARBONIZED HORIZONTAL

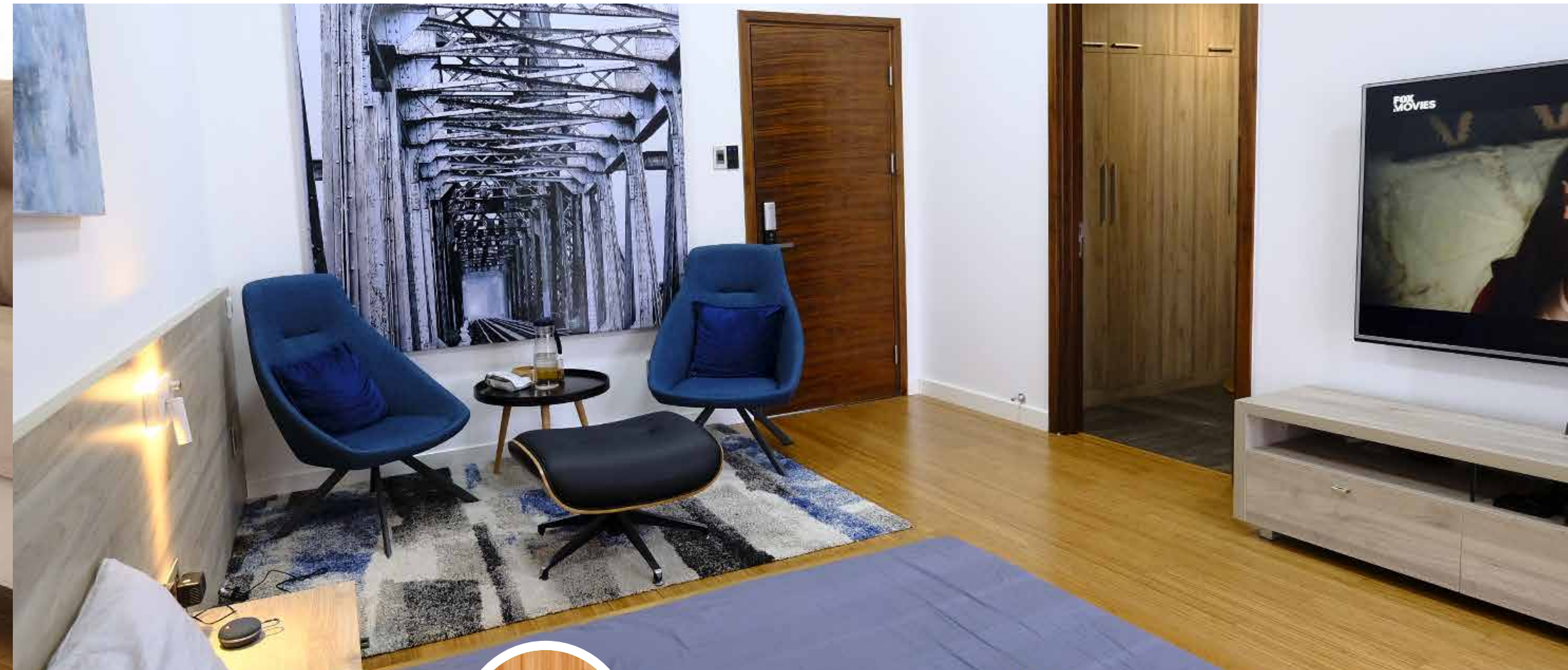


Horizontal Gold'Ali® bamboo flooring is what you picture when you think of bamboo flooring. Its horizontal pattern really shows off the natural grain and beauty of the fast growing eco-friendly grass. Horizontal bamboo tends to look more natural, and it easily becomes the focal point of the room with a true rustic feeling.



**CODE:** VGA-01C | 960\*96\*15MM  
VGA-12C | 980\*98\*12MM

## CARBONIZED VERTICAL



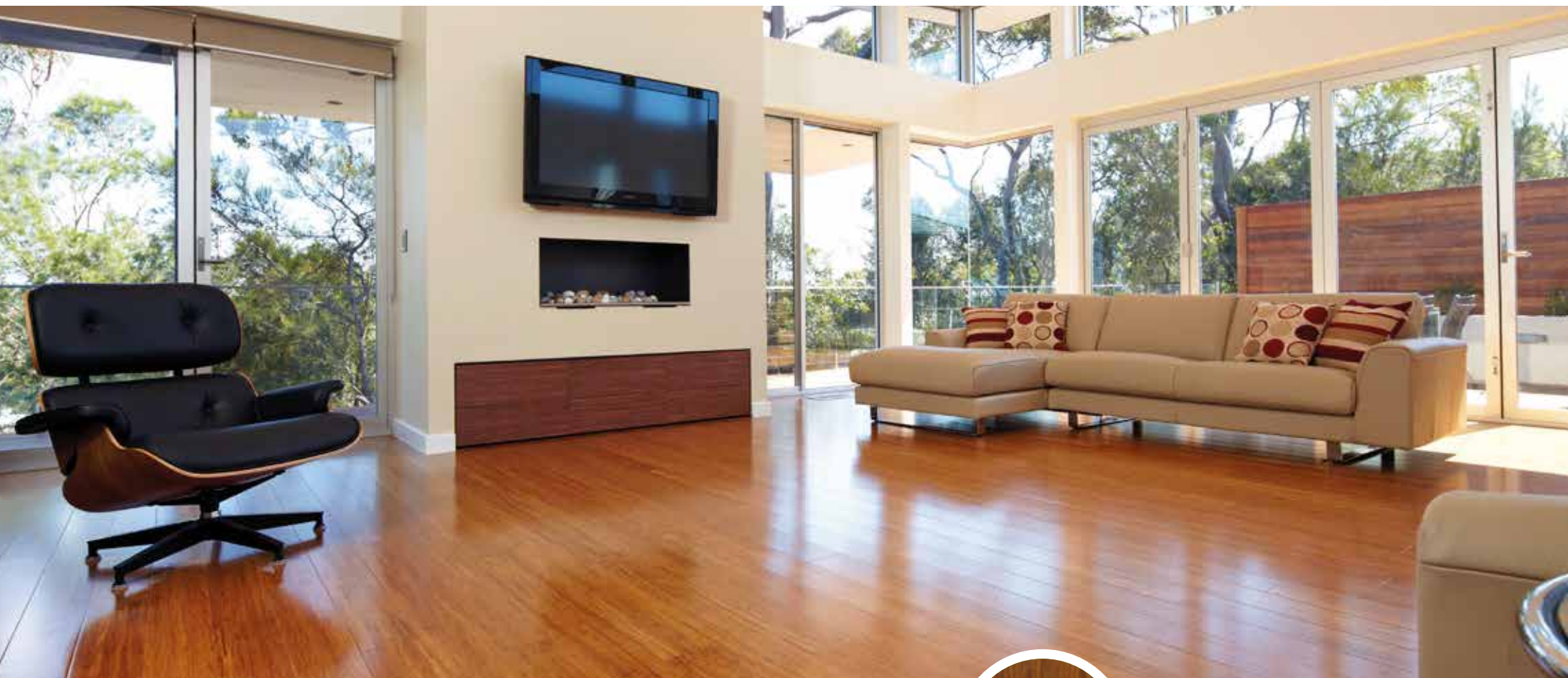
**CODE:** VGA-02C | 960\*96\*15MM



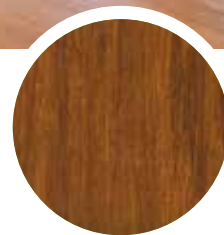
Vertical Gold'Ali® bamboo flooring is an alternative choice to horizontal bamboo flooring for a modern and comfort living space. Vertical bamboo gives a new viewpoint on the construction and the beauty of flooring - the delicate lines that can't be found in natural wood flooring.



## CARBONIZED STRAND WOVEN



Carbonized Diamond'Ali® bamboo flooring has warm and medium brown color with stunning natural bamboo veins - complementing any decor style, from traditional to contemporary. Our carbonated strand woven flooring is designed to be installed once, but enjoyed forever thanks to its superior stability and durability.

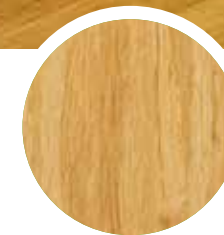


**CODE:** VDA-03C | 920\*130\*14MM

## NATURAL STRAND WOVEN



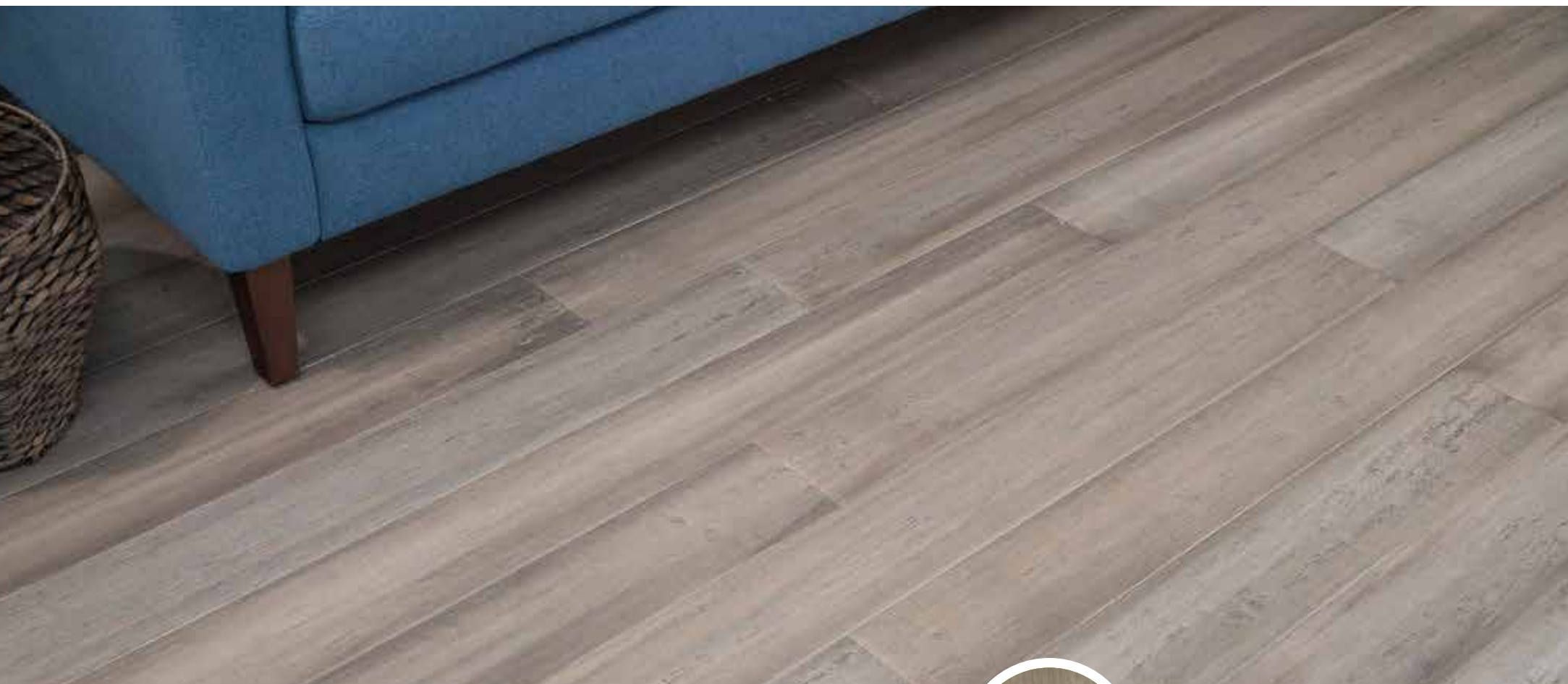
Natural Diamond'Ali® bamboo flooring is a versatile option for homeowners seeking a fresh and simple style, which can visually open up small spaces for a crisp and modern look. The perfect light golden honey color of the natural bamboo fiber brightens living areas.



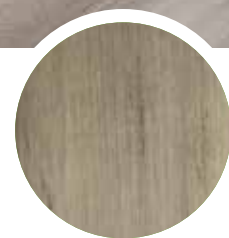
**CODE:** VDA-03N | 920\*130\*14MM



## SKYLINE PEARL'ALI



Skyline Pearl'Ali is a special bamboo flooring designed to meet the demand of contemporary, young and dynamic interior decoration with outstanding features of hardness, stability, durability... The product is very suitable for office, hotel, apartment...



**CODE:** VPA-04S | 1850\*130\*14MM

## BORDEAUX PEARL'ALI



**CODE:** VPA-04B | 1850\*130\*14MM



Bordeaux Pearl'Ali is a timeless gracious and romantic story - a seamlessly perfect blending refined taste with classic style. The Bordeaux colored bamboo flooring is definitely a great choice for the classical and neoclassical styles which is now the trendy movement in Vietnam.



## ANTIQUÉ PEARL'ALI



Designed for homeowners who want a rustic aesthetic without losing elegance, Antique Pearl'Ali bamboo flooring brings an emotional connection between past, present and future in a unique look, each board is a distinct work of art - meticulously hand-shaved for a natural nostalgic look and feel.

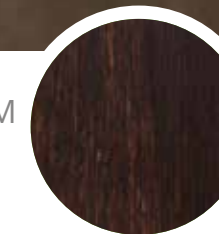


**CODE:** VPA-04A | 1850\*130\*14MM

## WALNUT PERAL'ALI



Among a sea of dark flooring options, Walnut Pearl'Ali promises the most unique and natural luxury. For those who love walnut wood furniture, Walnut Pearl'Ali® bamboo flooring is the best choice for an interior space perfect and sync. It's superior stability and durability is plus for choice.



**CODE:** VPA-04W | 1850\*130\*14MM



## BLACK PEARL'ALI



Whether you're ultimately looking for flooring a distinct difference or wonder a new idea of decorating your home showing a mysterious, powerful personality, the Black Stained bamboo flooring is one of the most perfect options. Black flooring helps the homeowners to exquisitely shows their elegance, power, social status and prosperity.

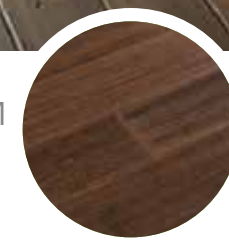


**CODE:** VPA-04L | 1850\*130\*14MM

## VINTAGE PEARL'ALI



**CODE:** VPA-04V | 1850\*130\*14MM



The longer floor plank draws the eye to the horizon, creating an increased sense of space, that brings elegance and sophistication to any interior space. That's a perfect product to show off unique home accents and décor and make everything pop.



## BEFORE INSTALLATION

- For large room, it is recommended to cut off the baseboards to increase the space for floor's expansion.
- Cut the foot of the door frame so that the floor is under the door and have enough space to expand.
- Remove excess mortar / plaster on the floor & check the floor before installation.
- Fix the T/F end-profile's base in the right positions on construction drawing details.
- Layout a layer of rubber/foam on the floor. Use tape to joint 2 foam edges together.
- Lift the excess foam onto the wall at least 100mm height in the area of installed skirting.
- Selection of the floor for the best appearance.



## INSTALLATION

- Make a gap of minimum 12 mm between the bamboo floor and the wall to create a material expansion
- Put glue to the groove of all planks, install the floor in the shape of 1-2 or 1-2-3.
- Check the finished floor before installing skirting, if there is any gap between the two boards, it is necessary to work for making sure no gap, remove any pin between the floor and the wall before installing skirting.
- Fix the bamboo skirting to the wall by nail, cut the excess foam with a paper knife, and seal the gap between the bamboo skirting and the wall with silicon.
- Install T/F end-profile at right position.
- Site clearance and hand-over.



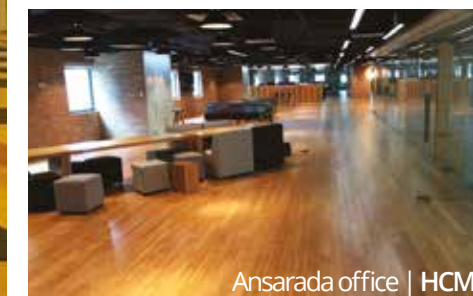
California Fitness & Yoga Center | Royal City



Altplus office | Hanoi



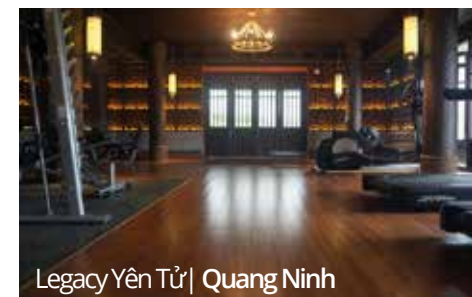
Times City | Hanoi



Ansarada office | HCMC



Water Front City | Haiphong



Legacy Yên Tử | Quang Ninh



Somerset | HCMC



Caye Sereno Tuần Châu | Ha Long



### Bamboo material for outdoor use

Bamboo material for outdoor use is manufactured with hot press technology, compressing bamboo fibers with special glue formula under high pressures to create bamboo board of superior hardness, better stability and higher durability, especially improving its properties to prevent insects and termites while retaining the natural beauty of bamboo material.

Beside the application of bamboo material for outdoor decking, for swimming pool, park, landscaping, garden, balcony...this special bamboo material can be used as cladding, fencing, ceiling, wall covering, gate doors and other decorative material for outdoor.

## PRODUCTS FEATURE



### Environment - friendly

Natural bamboo with physical treatment will be a sustainable and healthy choice.



### Mould-proof, anti-termite

After density-thermo treatment, the sugar have disappeared and bamboo is no longer a feeding place for fungi; improves the mold-resistance and anti-termite.



### High stability

Outdoor bamboo compressed by high pressure compression machine, thermo treatment process, bamboo decking has higher stability than other products.



### High hardness

Density of bamboo decking is more than 1000kg/m3 and the hardness is more than 3500 Psi according to Janka hardness scale.



### Corrosion-resistant

With the technology of hot pressing and reasonable glue ratio, bamboo decking has corrosion resistant feature, can be used nearby the sea.



### 20 years durability

In standard usage conditions, bamboo decking has 20 years durability.



# OUTDOOR COLLECTION

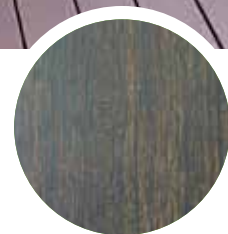
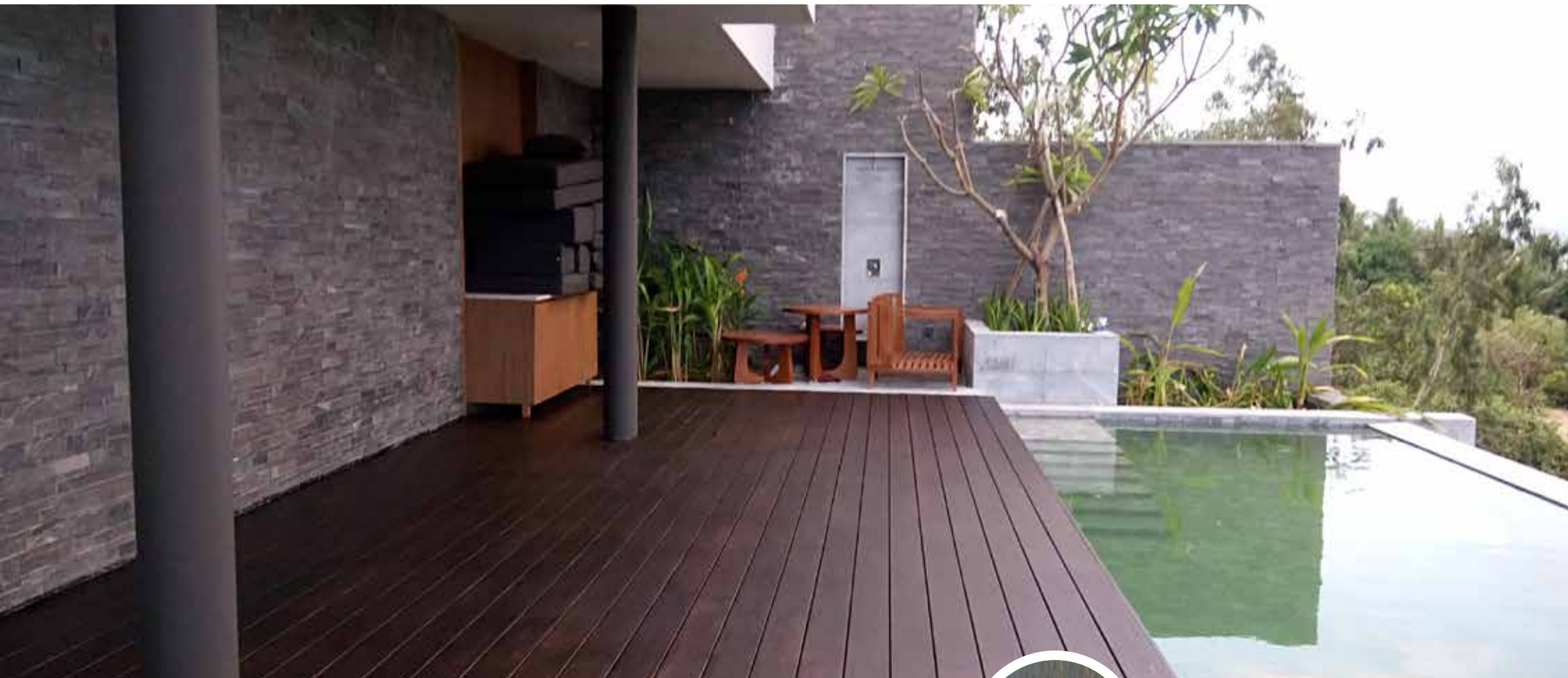
<b>HARDNESS</b> >3500 Psi	<b>BENDING STRENGTH</b> >80 Mpa	<b>TENSILE STRENGTH</b> >1000 Mpa	<b>DENSITY</b> +/-1200 kg/m3
------------------------------	------------------------------------	--------------------------------------	---------------------------------

1.600.000-1.800.000€/M2			1.600.000-1.800.000€/M2					

PRODUCT RANGE									
VTA-18DW	1850*137*18mm	VTA-20DW	1850*137*20mm	VTA-18CW	1850*137*18mm	VTA-20CW	1850*137*20mm	LTA-12DN	1860*100*12mm
VTA-18DN	1850*137*18mm	VTA-20DN	1850*137*20mm	VTA-18CN	1850*137*18mm	VTA-20CN	1850*137*20mm	OTA-12DN	1860*100*12mm
VTA-18DV	1850*137*18mm	VTA-20DV	1850*137*20mm	VTA-18CV	1850*137*18mm	VTA-20CV	1850*137*20mm	TTA-30DN100	1860*100*30mm



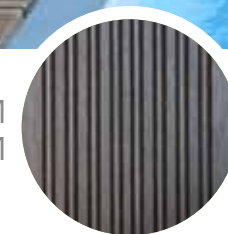
## SMOOTH SURFACE BAMBOO DECKING



In the trend of using green products - environmentally friendly materials, outdoor bamboo flooring is always the most perfect choice for exterior space. Dark surface give the building exquisite beauty and a harmonious combination with many different exterior styles.

**CODE:** VTA-18DN | 1850\*137\*18MM  
VTA-20DN | 1850\*137\*20MM

## WAVE SURFACES BAMBOO DECKING



Not only creating the exterior space of the mysterious beauty, the elegance of dark tones, the surface grooves increase the resistance to slip, increase the refraction of light to reduce feeling the heat of summer.

**CODE:** VTA-18DW | 1850\*137\*18MM  
VTA-20DW | 1850\*137\*20MM



## GROOVE SURFACE BAMBOO DECKING



The warm color of natural wood gives the exterior space a rustic feel. If you love natural wood, this is the most meaningful and perfect choice when bamboo is a substitute material for natural wood with a lot of preminent properties.



**CODE:** VTA-18CV | 1850\*137\*18MM  
VTA-20CV | 1850\*137\*20MM



**CODE:** LTA-12DN | 1860\*100\*12MM  
OTA-12DN | 1860\*100\*12MM  
TTA-30DN100 | 1860\*100\*30MM

## OTHER APPLICATION OF OUTDOOR BAMBOO



With superior technical properties, outdoor bamboo is the number 1 material for exterior application, meeting the criteria of durability, beauty, reasonable price and green material - giving a strong national identity and a richness in humaneness leveraging economic power and social status of the users.



## BEFORE INSTALLATION

- Clean the job site and be sure that the decking will not be water logging.
- Use sub frame joists with the recommend galvanized steel with size of minimum 30x30x1.8mm
- It is advisable to install of boards on sub frame joists with max 460mm space between the joists centers (board length supported by 5 crossed battens).
- Install with fasteners, choose the suitable fasteners with different requirement.
- Prepare suitable installation tool: screw driver, band tape, hammer, electronic drill



## INSTALLATION

- Determine the surface side of the boards (waved-or flat surface)  
Use suitable fasteners in the following sequence:
- Pre-drill the screw holes from the side of board. Be sure to drill with large enough to avoid craking of decking. Nail down first planks of one side to the sub beam by screw.
  - Insert the clip to other side of plank, then install it to the sub beam.
  - Tighten the screw in the clip and the sub beam.
  - Use a plastic hammer on the side of the following plank to secure the board with space 3mm
  - Use approx. 16-18 clips/m<sup>2</sup>. Use a clip on each sub beam.
  - Only use the included stainless steel decking screws.



6mm PROFESSIONAL FASTENER



3mm PROFESSIONAL FASTENER



## TYPICAL PROJECTS







## INTRODUCTION

Bamboo'Ali is a professional supplier and installer of selected quality bamboo flooring; wall and ceiling panels as well as furniture made of pressed bamboo.

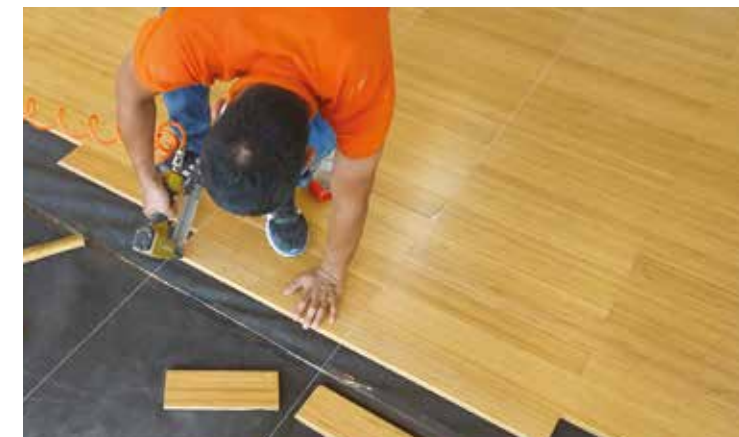
Our bamboo products are manufactured using advanced technologies under European standards.

The products have passed all necessary testing for safety with quality certification from the relevant laboratories.

We have supplied to a countless number of residential houses and thousands of commercial projects around the country, typically chains of senior gym centers, offices, hotels and resorts...

We are the first mover and number one company specializing in pressed bamboo for indoor and outdoor in Vietnam. We are proud that Bamboo'Ali is the Number One Bamboo Flooring Brand in Vietnam. With continuous creativity, Bamboo'Ali is developing diverse bamboo products and aiming to become the supplier for wide-ranging bamboo applications in Vietnam.

## WHY CHOOSE **bamboo'ali**



### Top Quality

At Bamboo'Ali, we combine our expertise in bamboo, technology and management skills to control over the production process from raw materials to finished products to ensure best quality.

### Professional Service

Bamboo'Ali provides customer services from design to selection of products matching decor style. We have professional team committed to best complete the installation stages on manner times with our own technology.

### Trusted Partner

We always put ourselves into customers' positions and commit as the business partner for mutual benefits. We do not just talk about giving you a real warranty, we are there when you need us.

### Brand Prestige

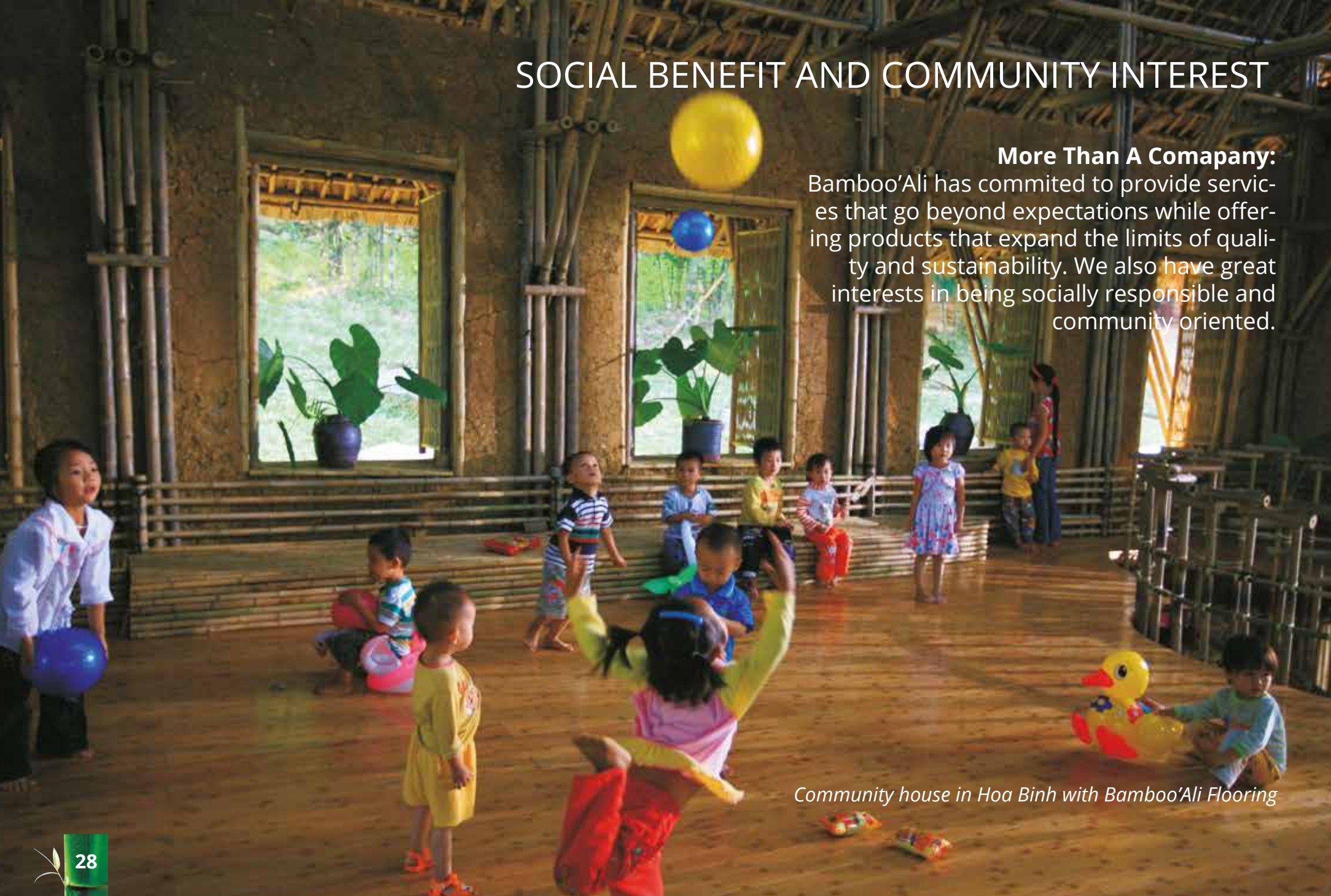
With Bamboo'Ali, you are assured about Number 1 Brand for bamboo flooring in Vietnam. Currently, Bamboo'Ali occupies over 80% market share in Vietnam for bamboo flooring.



## SOCIAL BENEFIT AND COMMUNITY INTEREST

### More Than A Company:

Bamboo'Ali has committed to provide services that go beyond expectations while offering products that expand the limits of quality and sustainability. We also have great interests in being socially responsible and community oriented.



*Community house in Hoa Binh with Bamboo'Ali Flooring*



*Bamboo contributes to poverty reduction*



**bamboo ali**

S I N C E 2 0 0 7

**HANOI**

Tel: (024) 39 11 22 88

Hotline: 0986 066 605

**HAIPHONG**

Tel: (0225) 664 24 68

Hotline: 0983 270 083

**DANANG**

Hotline: 0965 449 585

**HOCHIMINH CITY**

Tel: (028) 6291 5259

Hotline: 0911 666 605

[www.bambooali.com](http://www.bambooali.com)